



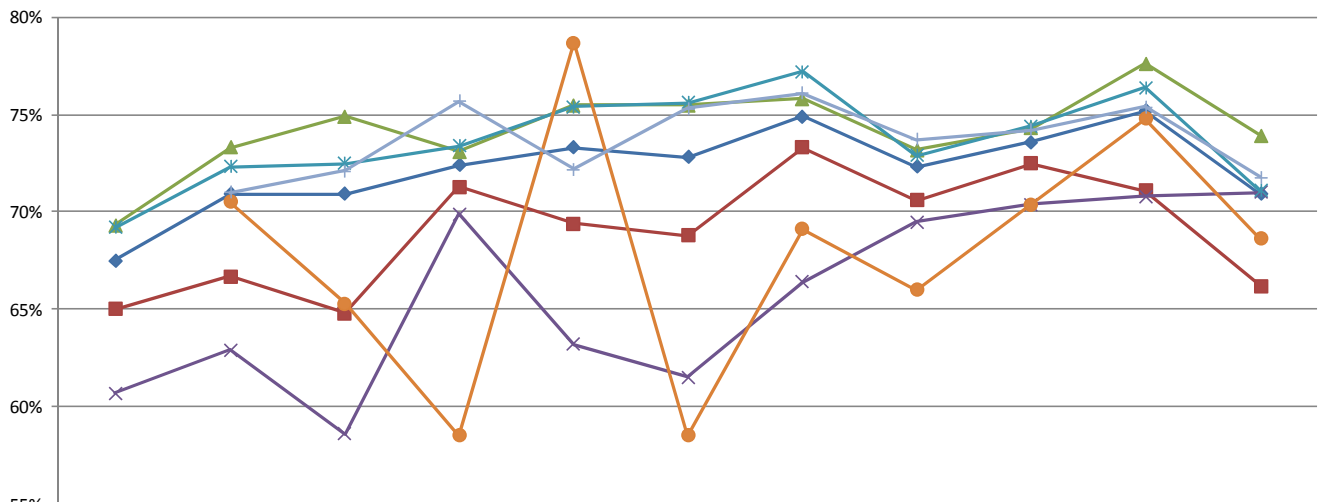
HISTORICAL TRENDS

Fall Cohort	Original Cohort*	One-Year Retention Rate	Four-Year Graduation Rate	Five-Year Graduation Rate	Six-Year Graduation Rate
2000	529	81.3%	52.0%	65.2%	67.5%
2001	547	82.3%	60.3%	69.0%	70.9%
2002	538	82.0%	59.9%	69.2%	70.9%
2003	566	82.7%	62.2%	70.5%	72.4%
2004	535	84.7%	63.9%	71.6%	73.3%
2005	563	86.0%	62.0%	71.0%	72.8%
2006	538	87.0%	65.2%	73.2%	74.9%
2007	530	83.0%	61.7%	70.4%	72.3%
2008	538	84.2%	59.1%	72.3%	73.6%
2009	534	84.1%	63.4%	72.6%	75.2%
2010	588	81.1%	62.4%	70.1%	70.9%
2011	532	82.9%	63.7%	73.5%	
2012	600	89.3%	69.8%		
2013	645	84.5%			
2014	587	84.5%			
2015	599	86.1%			
2016	594				

- † PLNU's one-year retention rate for the Fall 2015 entering freshman class climbed to 86.1% over the 84.5% from the previous two classes.
- † PLNU's most recent six-year graduation rate, which is based on the Fall 2010 entering first-time, full-time freshman cohort, is 70.9%. This is the lowest it has been since the Fall 2002 cohort.
- † The dip with the most recent six-year graduation rate is a one-year anomaly as the subsequent (Fall 2011 and Fall 2012) cohorts are showing record-setting five and four-year graduation rates (73.5% and 69.8%, respectively).
- † All but one of the demographics shown below reflect the dip in the six-year graduation rate. Non-white students from the Fall 2010 cohort actually show a slight increase in the six-year graduation rate. Drilling down, a substantial increase in the Asian American population rate is counter-balancing a dip in the Hispanic rate that is similar to the rest of the cohort.

* Cohort is based on the federal Student Right-to-Know Act, which defines an entering cohort as first-time freshmen who entered in Fall term or the immediately preceding Summer term who were enrolled full-time in the Fall term. In addition, students who died or left for military service are allowable exclusions; therefore, persistence rates are calculated on a revised cohort that may be slightly lower than the original cohort.

SIX-YEAR GRADUATION RATE DEMOGRAPHICS



	2000	2001	2002	2003	2004	2005	2006	2007	2008	2009	2010
◆ Total	67.5%	70.9%	70.9%	72.4%	73.3%	72.8%	74.9%	72.3%	73.6%	75.2%	70.9%
■ Men	65.0%	66.7%	64.8%	71.3%	69.4%	68.8%	73.3%	70.6%	72.5%	71.1%	66.2%
▲ Women	69.3%	73.3%	74.9%	73.1%	75.5%	75.5%	75.8%	73.2%	74.3%	77.6%	73.9%
× Non-White	60.7%	62.9%	58.6%	69.9%	63.2%	61.5%	66.4%	69.5%	70.4%	70.8%	71.0%
* White	69.2%	72.3%	72.5%	73.4%	75.4%	75.6%	77.2%	72.9%	74.4%	76.4%	71.1%
● Pell		70.5%	65.3%	58.5%	78.7%	58.5%	69.1%	66.0%	70.4%	74.8%	68.6%
+ Non-Pell		71.0%	72.1%	75.7%	72.2%	75.3%	76.1%	73.7%	74.2%	75.4%	71.8%