



THE COUNCIL OF  
INDEPENDENT COLLEGES

---

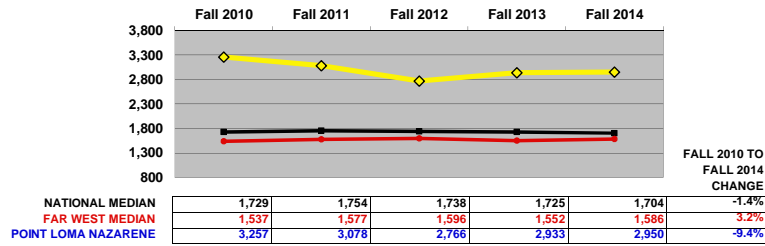
# Key Indicators Tool (KIT)

---

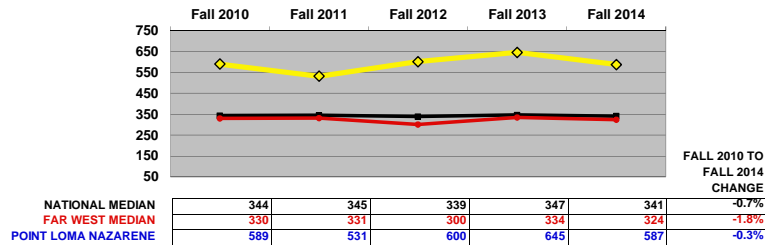
# Point Loma Nazarene University

## KIT TRENDS: STUDENTS

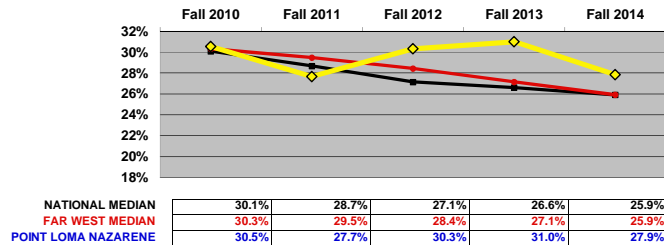
### 1) TOTAL FALL ENROLLMENT (FALL FTE)



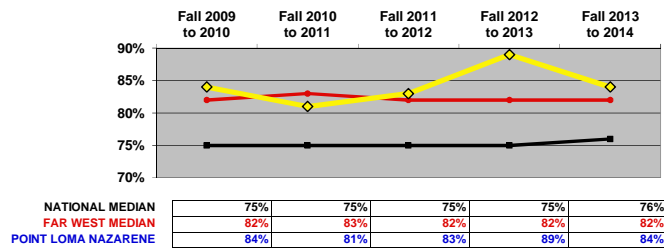
### 2) FIRST-YEAR ENROLLMENT (FULL-TIME UNDERGRADUATE)



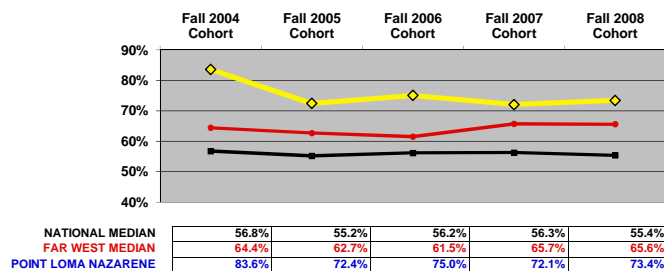
### 3) ADMISSIONS YIELD RATE (%) (ADMITTED TO ENROLLED)



### 4) RETENTION RATE (%) (FIRST TO SECOND YEAR)

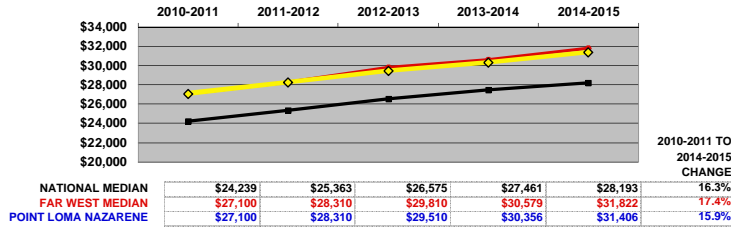


### 5) GRADUATION RATE (%) (SIX-YEAR COHORT RATE)

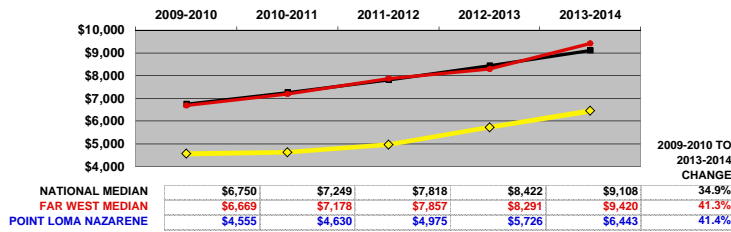


**Point Loma Nazarene University**  
**KIT TRENDS: TUITION REVENUE AND FINANCIAL AID**

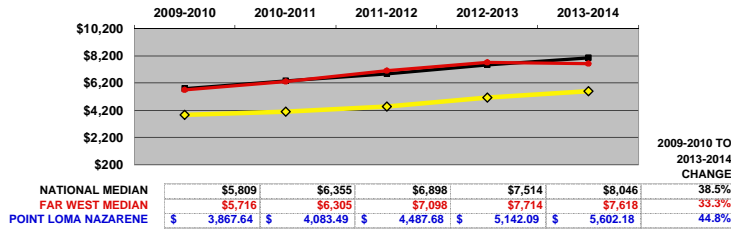
**11) TUITION PRICE (\$) (PUBLISHED TUITION AND FEES FOR FULL-TIME, FIRST-YEAR STUDENTS)**



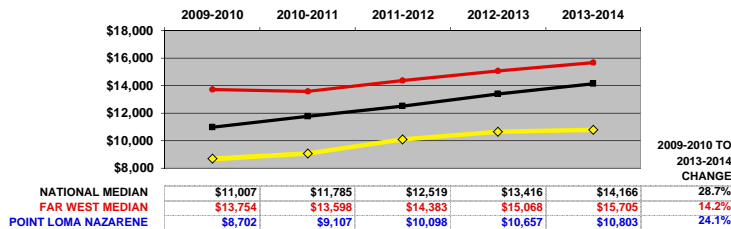
**12) TOTAL INSTITUTIONAL AID PER STUDENT (\$) (FUNDED AND UNFUNDED)**



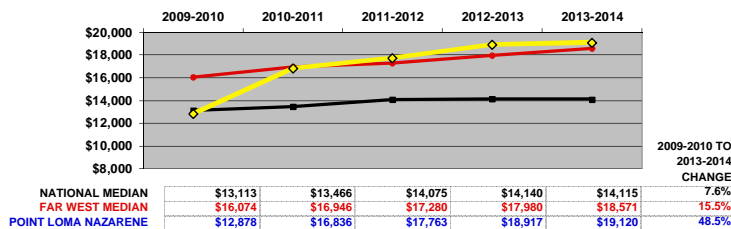
**13) UNFUNDED INSTITUTIONAL AID PER STUDENT (\$) (FUNDED AND UNFUNDED)**



**14) AVERAGE INSTITUTIONAL AID FOR FIRST-YEAR STUDENTS (\$) (FUNDED AND UNFUNDED)**

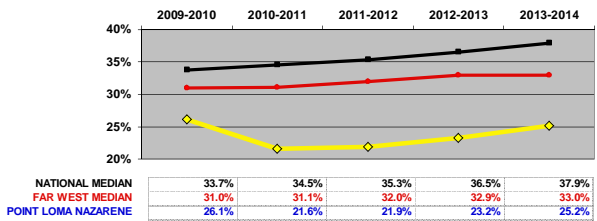


**15) NET TUITION REVENUE PER STUDENT (\$) (TUITION AND FEES LESS INSTITUTIONAL AID)**

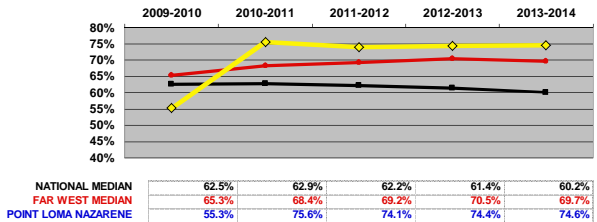


## Point Loma Nazarene University

### 16) DISCOUNT RATE (%) (INSTITUTIONAL FINANCIAL AID DIVIDED BY TUITION AND FEE REVENUE)

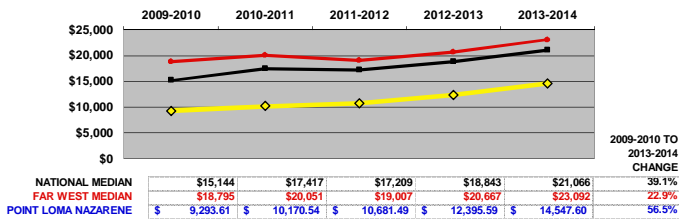


### 17) TUITION DEPENDENCY (%) (PERCENT OF TOTAL EXPENSES COVERED BY NET TUITION)

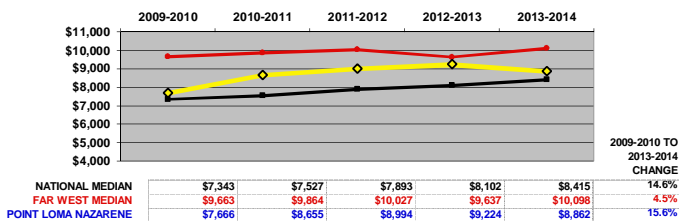


## KIT TRENDS: RESOURCES AND EXPENDITURES

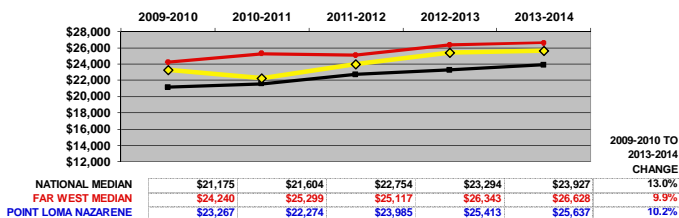
### 18) ENDOWMENT ASSETS PER STUDENT (\$)



### 19) INSTRUCTIONAL EXPENSE PER STUDENT (\$)



### 20) TOTAL EXPENSE PER STUDENT (\$)

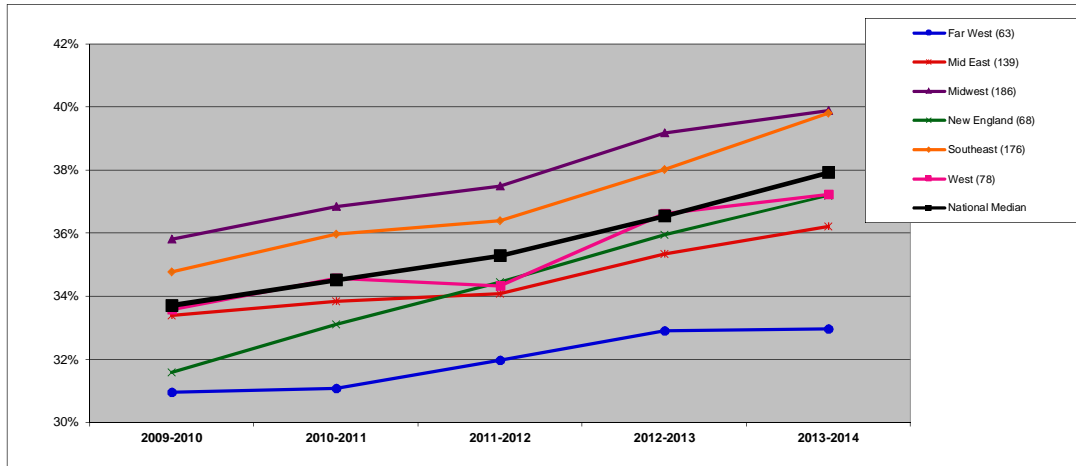


## DISCOUNT RATE (%): BY REGION (16R)

**DEFINITION:** Total institutional financial aid (funded and unfunded) for undergraduate and graduate students divided by total tuition and fee revenue. See Introduction for description of Carnegie classifications. (All national and regional data are presented as medians.)

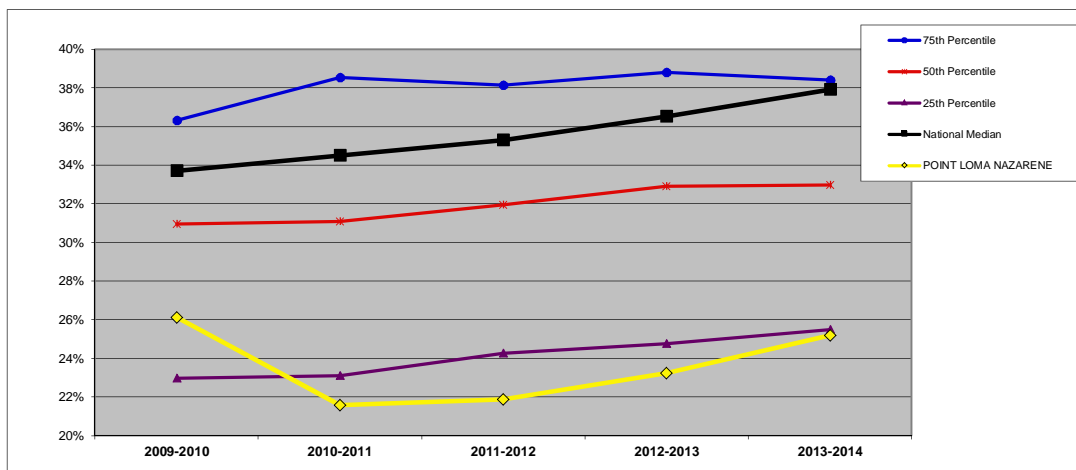
	2009-2010	2010-2011	2011-2012	2012-2013	2013-2014
<b>POINT LOMA NAZARENE</b>	26.1%	21.6%	21.9%	23.2%	25.2%

**NATIONAL (n=710).** All data on this chart are presented as medians. See Introduction for description of regions.



	2009-2010	2010-2011	2011-2012	2012-2013	2013-2014
Far West (63)	31.0%	31.1%	32.0%	32.9%	33.0%
Mid East (139)	33.4%	33.8%	34.1%	35.3%	36.2%
Midwest (186)	35.8%	36.8%	37.5%	39.2%	39.9%
New England (68)	31.6%	33.1%	34.5%	36.0%	37.2%
Southeast (176)	34.8%	36.0%	36.4%	38.0%	39.8%
West (78)	33.6%	34.6%	34.3%	36.6%	37.2%
National Median	33.7%	34.5%	35.3%	36.5%	37.9%

**FAR WEST REGION (n=63).** In addition to the median, which is the 50th percentile, this chart shows the 75th and 25th percentiles for the region.



	2009-2010	2010-2011	2011-2012	2012-2013	2013-2014
75th Percentile	36.3%	38.5%	38.1%	38.8%	38.4%
50th Percentile	31.0%	31.1%	32.0%	32.9%	33.0%
25th Percentile	23.0%	23.1%	24.3%	24.7%	25.5%
National Median	33.7%	34.5%	35.3%	36.5%	37.9%
POINT LOMA NAZARENE	26.1%	21.6%	21.9%	23.2%	25.2%