



Fall 2018

<b>Meeting days:</b> Mon and Wed	<b>Instructor:</b> Dr. Montague Williams
<b>Meeting times:</b> 10:45a – 12pm	<b>Phone:</b> 619-849-3282
<b>Meeting location:</b> RLC 101	<b>E-mail:</b> MontagueWilliams@pointloma.edu
<b>Final Exam:</b> Monday, Dec 10, 2018 10:30a – 1p	<b>Office location and hours:</b> Smee 202 Mon: 4p – 5:00p Tues and Thurs: 10a-11:30a

PLNU Mission

To Teach ~ To Shape ~ To Send

Point Loma Nazarene University exists to provide higher education in a vital Christian community where minds are engaged and challenged, character is modeled and formed, and service becomes an expression of faith. Being of Wesleyan heritage, we aspire to be a learning community where grace is foundational, truth is pursued, and holiness is a way of life.

COURSE DESCRIPTION

A study of the biblical foundations of the Holiness message, Wesleyan theological perspectives set in the context of the history of the Church, and the classic disciplines of spiritual formation.

COURSE LEARNING OUTCOMES

A study of the biblical foundations of the Holiness message, Wesleyan theological perspectives set in the context of the history of the Church, and the classic disciplines of spiritual formation.

1. You will reflect on and analyze the practices of worship, leadership, and friendship, alongside other Christian practices.
2. You will be able to name significant contributions of Wesleyan theology to the Church’s understanding of Christian faith and holy living.
3. You will evaluate the theological understandings and trajectories of various proposals and practices of compassionate and intercultural Christian ministry.

**REQUIRED TEXTS (in the order of usage in the course)**

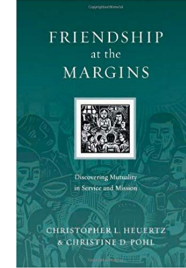
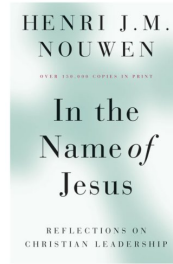
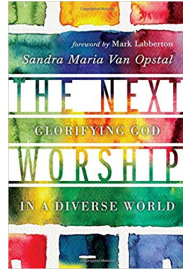
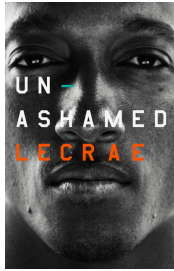
---

Moore, Lecrae. *Unashamed* by Lecrae Moore. Audio Book. ASIN: B01EB9BLC6.

Van Opstal, Sandra Maria. *The Next Worship: Glorifying God in a Diverse World*. ISBN-13: 978-0830841295.

Nouwen, Henri. *In the Name of Jesus*. ISBN-13: 978-0824512590

Heurtz, Christopher and Christine Pohl. *Friendship at the Margins: Discovering Mutuality in Service and Mission*. ISBN-13: 978-0830834549



**ASSESSMENT AND GRADING**

---

Assignments	Point Value
Participation	100 pts
Reading Quizzes	240 pts (30 each)
Church Visit Project	200 pts
Calling and Vocation Interview Paper	200 pts
Final Project	260 pts
Total	1000 pts possible

Grading Scale	
A=930-1000	C=730-760
A-=920-900	C-=700-720
B+=870-890	D+=670-690
B=830-860	D=630-660
B-=800-820	D-=600-620
C+=770-790	F=0-590

**INCOMPLETES AND LATE ASSIGNMENTS**

---

Unless otherwise stated by the professor assignments are to be submitted/turned in by the beginning of the class session when they are due—including assignments posted in Canvas. Incompletes will only be assigned in extremely unusual circumstances.

---

## **FINAL EXAMINATION POLICY**

Successful completion of this class requires taking the final examination **on its scheduled day**. The final examination schedule is posted on the [Class Schedules](#) site. No requests for early examinations or alternative days will be approved. See Final Project assignment below for more information on this.

---

## **PLNU COPYRIGHT POLICY**

Point Loma Nazarene University, as a non-profit educational institution, is entitled by law to use materials protected by the US Copyright Act for classroom education. Any use of those materials outside the class may violate the law.

---

## **PLNU ACADEMIC HONESTY POLICY**

Students should demonstrate academic honesty by doing original work and by giving appropriate credit to the ideas of others. Academic dishonesty is the act of presenting information, ideas, and/or concepts as one's own when in reality they are the results of another person's creativity and effort. A faculty member who believes a situation involving academic dishonesty has been detected may assign a failing grade for that assignment or examination, or, depending on the seriousness of the offense, for the course. Faculty should follow and students may appeal using the procedure in the university Catalog. See [Academic Policies](#) for definitions of kinds of academic dishonesty and for further policy information.

---

## **PLNU ACADEMIC ACCOMMODATIONS POLICY**

If you have a diagnosed disability, please contact PLNU's Disability Resource Center (DRC) within the first two weeks of class to demonstrate need and to register for accommodation by phone at 619-849-2486 or by e-mail at [DRC@pointloma.edu](mailto:DRC@pointloma.edu). See [Disability Resource Center](#) for additional information.

---

## **PLNU ATTENDANCE AND PARTICIPATION POLICY**

Regular and punctual attendance at all classes is considered essential to optimum academic achievement. If the student is absent from more than 10 percent of class meetings, the faculty member can file a written report which may result in de-enrollment. If the absences exceed 20 percent, the student may be de-enrolled without notice until the university drop date or, after that date, receive the appropriate grade for their work and participation. See [Academic Policies](#) in the Undergraduate Academic Catalog.

---

## **INCLUSIVE LANGUAGE**

The School of Theology and Christian Ministry is committed to the equality of women and men. Recognizing that people have often used the English language in ways that imply the exclusion or inferiority of women, the school urges students, faculty, and staff to avoid sexist language in public discourse, in classroom discussion, and in their writings. Thus, terms like "man" or "mankind" or the pronoun "he," should not be used to refer to all humans. Instead "people," "humanity," "humans," and "he or she" better acknowledge women as full persons.

## ASSIGNMENTS

---

**Participation** – Participation makes up 100 points (10% of the student’s course grade). The professor may call upon any student to answer a question or expound upon a particular topic or reading. Students who are regularly punctual and present without unexcused absences/tardies can expect to earn at least 75 points for their participation score at the end of the semester. Students who do this but *also* regularly participate in classroom dialogue can expect to earn at least 90 points for their participation grade. Regularly participating in class means you are consistently offering thoughtful comments and questions as well as respectfully supporting the participation of fellow students.

**Reading Quizzes** – Reading Quizzes make up 240 points (24% of the student’s course grade). There will be 9 short reading quizzes, but the professor will drop each student’s lowest reading quiz score. The first portion of each reading quiz includes self-reporting regarding the students’ completion of the reading assignment as well as their quality of reading (*Yes, honesty is part of a life of holiness in case you were wondering*). To be more specific, students will score their own reading based on the following scale:

5 = I read every word of the assignment and took notes.

3 = I read more than half of the reading assignment.

1 = I read less than half of the reading assignment.

0 = I did not read the assignment for today.

The second portion of the reading quiz will include one or two questions or prompts that relate to the reading. The student’s response will be scored on a scale of 0 – 5. For example, one prompt could say:

In Chapter 3 of Heurtz and Pohl’s *Friendship at the Margins*, the authors make the case for rethinking the work of Christian mission. In one to three sentences, summarize the kind of changes they are suggesting throughout the chapter.

Because the reading quizzes will be open-book, the responses need to be thorough and thoughtful to receive a score of 5. The two portions give total possible score of 10 for each Reading Quiz. Reading Quizzes will be offered during the beginning of each class in which reading is due.

**Church Visit Group Project** – The Church Visit Project is worth 200 points (20% of the student’s course grade). The project includes 1) visiting a worship service in a group of 4 to 5 students, 2) giving a group presentation to the class about your church visit, and 3) completing and submitting a peer evaluation form. See the course schedule for the due date.

*A Few Words on the Church Visits:* In groups of 4 to 5, students will visit one worship service of a congregation in San Diego and present an analysis of the worship service in class. The worship service must be the regular in-person worship gathering of a Christian congregation. In other words, online services, television services, youth group meetings, and bible studies are all unacceptable for this assignment. The church you visit for this assignment must identify itself as part of a branch *within*

Christianity (Protestant, Catholic, or Orthodox). Visit a congregation that is either intercultural, interracial or culturally distinct from participants in your group. *Your entire group has to visit the same worship service together.* Please note that no group can visit and present on the same church as another group. Finally, remember that you are guests during these visits. Please be respectful of your hosts.

*A Few Words on the Group Presentation:* The presentations must be no shorter than 10 minutes and no longer than 12 minutes. The presentation must display equal participation among the group's members. Each group will submit its PowerPoint or Keynote presentation file to the professor 24 hours before the presentation.

The professor will provide a grading rubric for the presentation. However, please take note of the basic requirements listed below:

1. A picture of the entire group at the church location.
2. A brief explanation of why you chose to visit the church you visited.
3. A description of the worship service. Comment on the sanctuary/meeting space, the flow of worship/liturgy, the types of worship or preaching experienced, other things you observe, etc.
4. An analysis of the worship service using the Van Opstal text. This analysis should make up at least half of the presentation time.

*A Few Words on the Peer Evaluation Form:* To assist the professor in offering fair individual grades amidst this group project and to make space for communication about complications, students will submit one peer evaluation form on Canvas by 11:59pm on the day of their group presentations. This form asks direct questions to help you evaluate and grade yourself as well as the contributions of each person in your group. Submitting this form is very important. *Students who do not submit a peer evaluation form have not yet completed their portion of the church visit project, and will receive a 0% on the entire project.*

**Calling and Vocation Interview Paper** – The Calling and Vocation Interview Paper is worth 200 points (20% of the student's course grade). Students will submit a 250-300 word paper about another person's sense of calling and vocation. More specifically, you will interview an assigned partner from the class and write your paper with the following components and flow.

1. Introduction. (25-35 words.)
2. What insights did your partner gain from reading Nouwen's *In the Name of Jesus*? (50 – 60 words.)
3. What kind of life does your partner sense God calling her/him to live? (50 – 60 words.)
4. What kind of steps is your partner taking or thinking about taking to embrace that call? (50 – 60 words.)
5. What insights did you learn from your partner? (75 - 85 words.)

See course schedule for due date. If you feel uncomfortable about being partnered with particular individuals, please let the professor know no later than October 15.

**Final Project** – The final project is worth 260 points (26% of the student’s course grade). You will submit *your own original creation* that substantively expresses and builds upon content from this course. This project can focus on theological, sociological, historical, or other concepts from the course, and it can be done in a variety of ways (i.e., painting, story, short film, song, music video, game, app, built structure or machine, etc.).

Along with your original creation, you must submit an “artist’s memo” that explains your intentions, goals, and purposes for its composition. The “artist’s memo” needs to answer the following questions:

1. What is the significance of this piece?
2. How does it substantively relate to content in the course?

Your explanation in the “artist’s memo” needs to make it very clear that you understand the course content and that your original creation has been created in a thoughtful and careful manner. The length of the “artist’s memo” is 100 – 250 words.

The Final Project is due at the beginning of the Final Exam time slot, and it needs to be submitted in the final exam room.

**Extra Credit** – Point Loma Nazarene University is hosting a book discussion on *March Volume 1* by John Lewis, et. al. You can receive 30 points (3%) of extra credit toward your final course grade if you read *March Volume 1* and participate in the book discussion at 6pm on September 18, 2018 in the PLNU Ryan Library.

### THE306 Life of Holiness - Course Schedule

Date	Topic	Readings DUE	Other Items DUE
Tues 8/28	<i>Syllabus Review</i>		
8/29	<i>Class Introductions</i>		
9/3	<b>No Class – Labor Day</b>		
<b>Unit 1: Worship and Theological Formation</b>			
9/5	<i>Introduction to Holiness Theology</i>	Moore, entire audiobook	Reading Quiz 1
9/10	<i>Worship as Orienting Practice</i>	Van Opstal, Intro - Ch. 3	Reading Quiz 2
9/12	<i>Encountering Difference</i>	Van Opstal, Ch. 4	Reading Quiz 3
9/17	<i>Models and Components of Diverse Worship</i> (Canvas)	Van Opstal, Ch. 5-6	Reading Quiz 4
*Tue 9/18	*Extra Credit Opportunity! – <i>March</i> Discussion. 6pm in the Ryan Library		
9/19	<i>What is the Church?</i> (Canvas)		
9/24	<i>Worship as Cultivating Change</i> (Canvas)	Van Opstal, Ch. 7-Epilogue	Reading Quiz 5
9/26	<i>Denominations and Movements</i> (Canvas)		
10/1	<i>Theology in Worship</i>		
10/3	<b>Church Visit Presentations</b>		Pres. Groups 1, 2, 3, 4, 5
10/8	<b>Church Visit Presentations</b>		Pres. Groups 6, 7, 8, 9, 10
<b>Unit 2: Discerning Vocation</b>			
10/10	<b>No Class – Prof. Speaking at Conference</b>		Church Visit Peer Reviews Due (Canvas)
10/15	<i>Leadership and the Holy Life</i>	Nouwen, entire book.	Reading Quiz 6
10/17	<i>Hearing Each Other's Stories</i>		
10/22	<i>Pilgrimage and Vocation</i>		Vocation and Calling Interview Paper

<b>Unit 3: Christ-Centered Friendship</b>			
10/24	<i>Friendship and the Nature of God</i>		
10/29	<i>Embracing a Life of Friendship</i>	Heurtz & Pohl, Intro - 1	Reading Quiz 7
10/31	<i>Wesleyan Small Groups</i>		
11/5	<i>Wesleyan Economics</i>	Heurtz & Pohl, 2 - 3	Reading Quiz 8
11/7	<i>Wesleyan Ecumenism</i>		
11/12	<i>Spirituality for Christian Friendship</i>	Heurtz & Pohl, 4 - 5	Reading Quiz 9
11/14	<i>Cultivating Civil Discourse 1</i>		
11/19	<i>Cultivating Civil Discourse 2</i>		
<b>Unit 4: Christian Practices of Devotion</b>			
11/21	<b>No Class – Thanksgiving Break</b>		
11/26	<i>Reading Scripture</i>		
11/28	<i>Artistic Expression</i>		
12/3	<i>Lament</i>		
12/5	<i>Sabbath</i>		
12/10 10:30	<b>Final Projects Due</b>		

\*\*Required “seat time” is accomplished through class time, Canvas activity, and church visits. Note that the following class days are on Canvas: 9/17, 9/19, 9/24, 9/26. These items and all other items on the syllabus and course schedule can change in light of the professor’s discretion.