
ART226 PHOTOGRAPHY: DIGITAL

SYLLABUS FA/17



COURSE DESCRIPTION

Art 226 is an introductory level course in photography. This course focuses on using digital technologies for the application of contemporary image making. The coursework addresses the visual language used to create, respond to, and evaluate the photograph as fine art. We will explore the various technology associated with digital photography such as the digital camera, using the computer as darkroom, studio lighting, and digital print making . In addition we will be examining the effective use of color in image making, exploring photography as a story telling medium and discussing the ethical issues surrounding image manipulation.

Rhein II
Andreas Gursky, 1999
C-print mounted to acrylic
73 in x 143 in

LEARNING OUTCOMES

Students will...

Acquire technical skills such as the manual operation of camera, the ability to determine correct exposure settings, the ability to process RAW images using Adobe Bridge and Adobe Photoshop and create color prints.

Identify basic rules of picture composition and evaluate photographs in terms of their technical control and visual content.

Articulate their motivations, conceptual intent, and feelings about the work they present in critique as well as offer constructive criticism to their classmate about the work they present at critique.

Discuss the ethical implications of creating digital photographic images



Unless

Jill Greenberg, 2005
Archival Pigment Print
50 in x 43 in

COURSE REQUIREMENTS

Weekly Images & Contact Sheet

Weekly Images & Contact Sheet

Each week the students will be presented with a new photo assignment. These assignments are intended to advance the students technical and conceptual abilities. Each week you will be responsible for shooting at least 24 shots based on the assignment and then turning in at least one image and one contact sheet, along with a brief statement. These will be submitted digitally at the beginning of class and a brief class discussion/critique will follow.

Written Work

Each student will be required to write two short writings this semester. The first will be a 1-2 page (12pt., double spaced) report developed for a photo

journalism assignment. This will be copy developed in tandem with a series of photographs that together tell a story. This assignment will develop your skills at telling a story with your camera as well as compare how both image and traditional narrative communication.

The second will be a series of artist's statements developed for a series of images turned in for the midterm and final critiques. More details on these will be given in class.

Critiques

There will be two in class critique held during the semesters. These critiques offer the opportunity for a dialogue of constructive criticism that helps the artist to find the strengths and weaknesses of her work. Each student is expected to contribute to this discussion. In fact your participation grade is based in part on your willingness to join in during the critique. If you are absent from a critique or your images are not "critique ready" your work is considered late, and the highest grade you can receive for that project is a "C". There is no way of making up the points lost for missing a critique.

REQUIRED EQUIPMENT

See required equipment handout

RECOMENDED READING

Photoshop CC (or CS6) book for Digital Photographers By Scott Kelby



*"Irma the Bearer
—Pictures of Garbage"*
Vik Muniz, 2008–2011

ATTENDANCE

Per PLNU policy, your attendance is required at every class session. The following attendance policy will be strictly enforced.

- 1-2 unexcused absences--no effect
- 3-4 unexcused absences--1/2 grade deduction each
- 5-6 unexcused absences-- whole grade deduction each
- 6+ unexcused absences-- fail
- 1-15 minutes late --Tardy
- 4 Tardy --Absent

CELL PHONES & COMPUTERS

Under no circumstances are students to be making phone calls or texting during class time. They are expected to be involved with what is happening in class, not at the other end of their phones. Similarly, the use of the computer for non class related activity is not permitted. The following cell phone and computer policy will be enforced.

- 1st offence - verbal warning
- 2nd offence-verbal warning, marked tardy
- 3 or more - no warning, an absence for each offence

ACADEMIC DISHONESTY

Students should demonstrate academic honesty by doing original work and by giving appropriate credit to the ideas of others. Academic dishonesty is the act of presenting information, ideas, and/or concepts as one's own when in reality they are the results of another person's creativity and effort. A faculty member who believes a situation involving academic dishonesty has been detected may assign a failing grade for that assignment or examination, or, depending on the seriousness of the offense, for the course. Faculty should follow and students may appeal using the procedure in the university Catalog. See Academic Policies for definitions of kinds of academic dishonesty and for further policy information.

PLNU COPYRIGHT POLICY

Point Loma Nazarene University, as a non-profit educational institution, is entitled by law to use materials protected by the US Copyright Act for classroom education. Any use of those materials outside the class may violate the law.

FINAL GRADE BREAKDOWN

Grades will be based on a total number of points accumulated during the semester, with a possible total of (approximately) 600 pts.

Weekly Images/Contacts	300 pts. (30 each)
Participation	100 pts. (50 & 50)
Critiques	200 pts. (100 each)

A = 93 – 100%	of possible points
A- = 90 – 92%	of possible points
B+ = 87 – 89%	of possible points
B = 83 – 86%	of possible points
B- = 80 – 82%	of possible points
C+ = 77 – 79%	of possible points
C = 73 – 76%	of possible points
C- = 70 – 72%	of possible points
D+ = 67 – 69%	of possible points
D = 63 – 66%	of possible points
D- = 60 – 62%	of possible points
F = 0 – 59%	of possible points

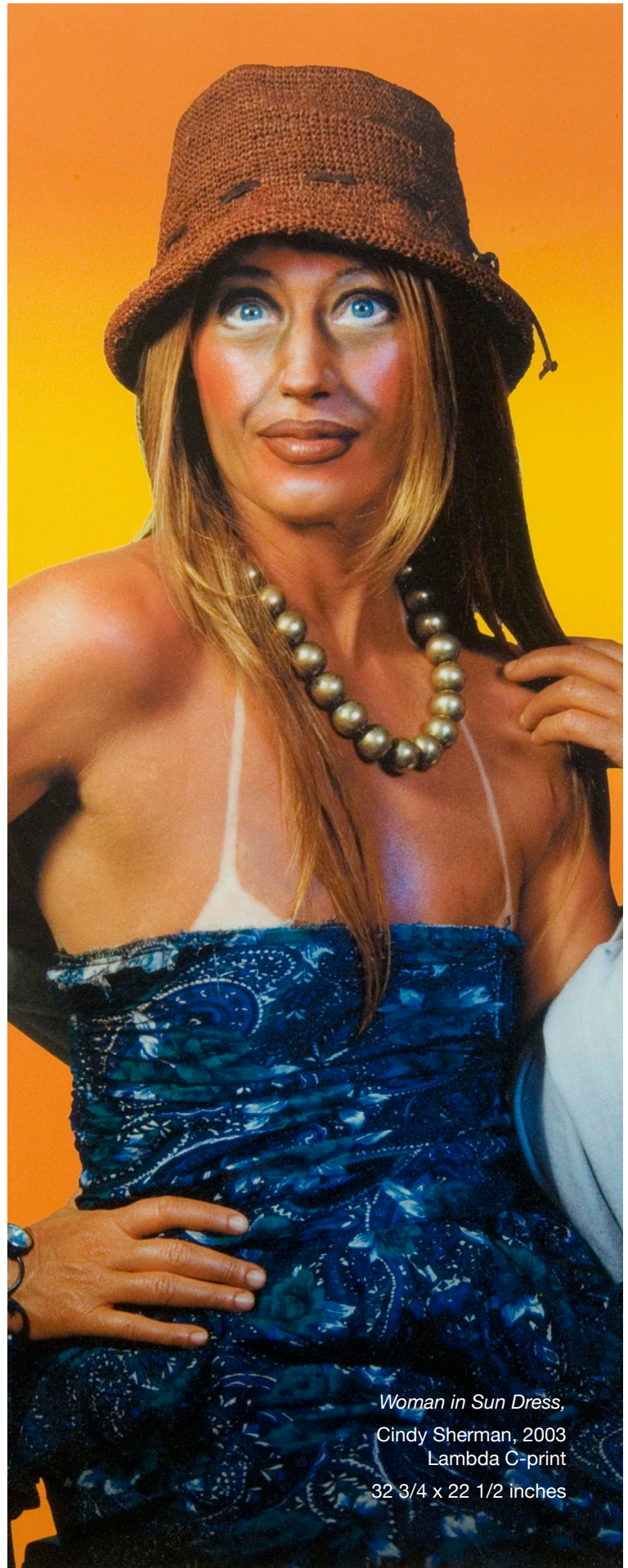
GRADING POLICY

While the grading of art is necessarily subjective, I try to approach each student's work as fairly and objectively as possible, taking in to account each of the student's circumstances & abilities. Individual work will be graded on the following components

- Meets Project Objectives
- Effort
- Composition
- Craftsmanship/Technical
- Concept/Creativity

A more specific breakdown of how individual projects are to be evaluated will be provided in a handout upon the introduction of each project.

Assignments turned in late receive an automatic one letter grade deduction. For each additional day the assignment is late an additional letter grade will be deducted.



Woman in Sun Dress,
Cindy Sherman, 2003
Lambda C-print
32 3/4 x 22 1/2 inches

FALL 2017

1	Tuesday 8/29 No Class	Thursday 8/31 Syllabus		Tuesday 10/24 Switching over to Lightroom	Thursday 10/26 Lightroom
2	Tuesday 9/5 Self Portraits Camera Review Setting up "Darkroom"	Thursday 9/7 RAW Workflow Contact Sheets		Tuesday 10/31 Lighting: Studio Shoot Portrait	Thursday 11/2 Lighting: Studio Shoot Portrait
3	Tuesday 9/12 Raw Color	Thursday 9/14 Photoshop Color		Tuesday 11/7 Portrait Touch Touch Ups	Thursday 11/9 Lighting: Object
4	Tuesday 9/19 Basic Touch Ups	Thursday 9/21 Scale & Sharpening Printing		Tuesday 11/14 Photo Ethics	Thursday 11/16 Vic Muniz Wasteland
5	Tuesday 9/26 Stacking, Stitching Layering	Thursday 9/28 Stacking, Stitching Layering		Tuesday 11/21 Photo Journalism Introduced	Thursday 11/23 Thanksgiving Break No Class
6	Tuesday 10/3 Landscape	Thursday 10/5 HDR		Tuesday 11/28 Photo Journalism Presentations	Thursday 11/30 TBA
7	Tuesday 10/10 Matting & Finishing	Thursday 10/12 Midterm Workday		Tuesday 12/5 Lab	Thursday 12/7 Lab
8	Tuesday 10/17 Mid Term Critique	Thursday 10/19 Mid Term Critique	Desert Trip ?	Tuesday 12/12 Final Critique 10:00 - 1:20	Thursday 12/14 Finals Week No Class

Mid semester grades given